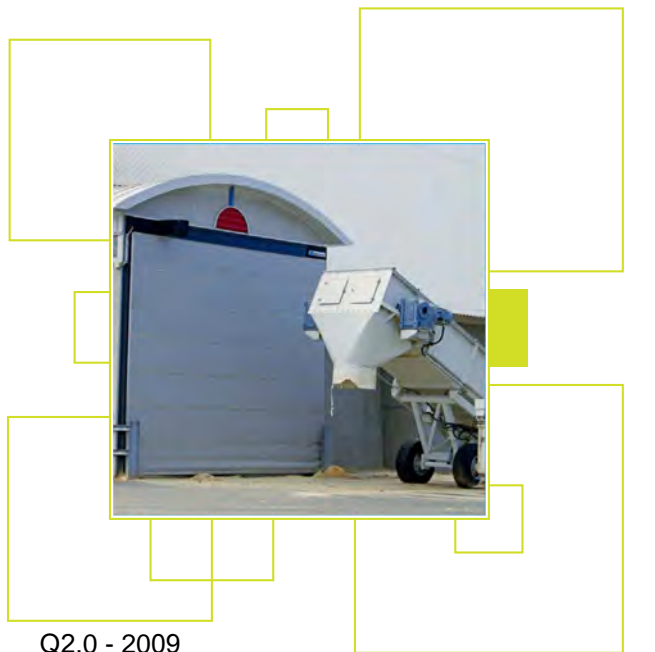


# Megadoor S800 Vertical fabric folding door

## Product datasheet



Q2.0 - 2009

# Copyright and Disclaimer Notice

Although the contents of this publication have been compiled with the greatest possible care, ASSA ABLOY Entrance Systems cannot accept liability for any damage that might arise from errors or omissions in this publication. We also reserve the right to make appropriate technical modifications/replacements without prior notice.

No rights can be derived from the contents of this document.

Color guides: Color differences may occur due to different printing and publication methods.

ASSA ABLOY, Crawford, Megadoor and hafa, as words and logos, are examples of trademarks owned by ASSA ABLOY Entrance Systems or companies within the ASSA ABLOY Group.

Copyright © ASSA ABLOY Entrance Systems 2006-2011

No part of this publication may be copied or published by means of scanning, printing, photocopying, microfilm or any other process whatsoever without prior permission in writing by ASSA ABLOY Entrance Systems.

All rights reserved



# Technical facts

## Features

Max size: (W / H)*	8000/12000 mm
Door leaf thickness:	100 mm
Fabric types:	Standard: Polyester (coating: plasticised PVC) Options: Arctic, sound reduction, heat resistant, security
Colour:	8 standard RAL colours
Guide rails material:	Aluminium
Windows:	Vision panels (800 x 800 mm standard)
Seals:	Bottom, side and top seal
Operation:	Standard: Electrical operator Optional: Automated operation, Access control, Safety functions

\* Other sizes may be available on request

## Performance

Operating speed:	Normal opening speed: 0.2-0.3 m/sec Increased opening speed: 0.4-0.6 m/sec
Wind load resistance*: (differential pressure)	0.7-1.6 kPa depending on size (class 3-5, EN 12424)
Wind speed, door in motion:	< 20 m/s
Sound reduction (standard):	15 dB Rw (ISO 717)
Water resistance:	0.11 kPa for closed door (class 3, EN 13241)
Air permeability:	12 m <sup>3</sup> /(m <sup>2</sup> h) (class 2, EN 13241)
Operating environment temperature range:	-35°C to +70°C

\* Higher wind loads on request.

# Contents

Copyright and Disclaimer Notice .....	ii
---------------------------------------	----

Technical facts .....	iii
-----------------------	-----

Features .....	iii
Performance .....	iii

<b>1. Description .....</b>	<b>6</b>
-----------------------------	----------

1.1 General .....	6
1.1.1 Standard .....	6
1.1.2 Options .....	6
1.2 Door leaf .....	7
1.2.1 Construction .....	7
1.2.2 Intermediate section .....	7
1.2.3 Bottom section .....	7
1.2.4 Safety arresters .....	7
1.2.5 Material .....	8
1.2.6 Colours .....	8
1.2.7 Options .....	8
1.3 Guide rails .....	9
1.3.1 Jambs .....	9
1.3.2 Wind deflectors .....	9
1.4 Header box .....	10
1.4.1 Header box options .....	10
1.4.2 Self-supporting header box .....	10
1.5 Operating system .....	11
1.5.1 Electrical operation .....	11
1.5.2 Belt system .....	11
1.5.3 Gear motor .....	11
1.5.4 Control unit .....	11
1.5.5 Safety edge .....	12
1.5.6 Access and automation .....	13

<b>2. Specifications .....</b>	<b>15</b>
--------------------------------	-----------

2.1 Clear width and clear height .....	15
2.2 Performance .....	15
2.3 Environmental tolerance .....	15
2.4 Surface treatment .....	15
2.5 Door leaf .....	16
2.5.1 Fabric data .....	16
2.6 Operating system .....	19
2.6.1 General specifications .....	19

<b>3. CEN Performance .....</b>	<b>20</b>
---------------------------------	-----------

3.1 Resistance to windload .....	20
3.2 Additional tests .....	20

<b>4. Building and space requirements .....</b>	<b>21</b>
---	-----------

4.1 Building preparations .....	21
4.1.1 Installation of the header box .....	21
4.1.2 Installation of the guide rails .....	23
4.1.3 Installation of the control unit .....	23
4.2 Space requirements .....	24
4.2.1 Space requirements for operation .....	24
4.2.2 Space requirements for control unit .....	24



4.2.3	Space requirements for maintenance .....	25
4.2.4	Space requirements - Installation against wall .....	26
4.2.5	Space requirements S800 - Installation against wall between columns.....	27
4.2.6	Space requirements - Installation with self-supporting header box .....	28
4.2.7	Space requirements - Installation in door opening .....	29
<b>5.</b>	<b>Service .....</b>	<b>30</b>
	These keys open doors to better business .....	30
<b>6.</b>	<b>Index.....</b>	<b>31</b>

# 1. Description

## 1.1 General

The Megadoor S800 vertical fabric folding door is especially designed for extreme industrial environments where doors are exposed to moisture, dust and very high or low temperatures, or where the door opening is large.

The unique design and structure offers durability, tightness, energy efficiency, operational reliability and minimum maintenance. Every door is individually designed to meet application requirements, for example wind load.



The Megadoor S800 vertical fabric folding door has 4 primary parts:

1. Door leaf
2. Guide rails
3. Header box
4. Operating system

### 1.1.1 Standard

The Megadoor S800 vertical fabric folding door is supplied with the following specifications as standard:

Door leaf:	Polyester, 1100 dtex with plasticised PVC coating
Safety:	Safety arresters Optical safety edge
Operation:	Operator + control unit
Colours:	Choice of 8 standard RAL colours

### 1.1.2 Options

Megadoor provides a wide range of options and accessories to customise the Megadoor S800 vertical fabric folding door to any customer's needs. For example:

Door leaf:	Arctic, heat resistant, sound reduction and security fabrics Vision panels Clamp strip covers
Guide rails:	Jams for protection and insulation Heating cables
Header box:	Protective cladding
Colours:	Optional colours on request
Operation:	Automation



## 1.2 Door leaf

### 1.2.1 Construction

The door leaf is made of two layers of very strong vinyl-coated polyester fabric, separated by aluminium intermediate sections. The aluminium top section is bolted to the header box, the steel and aluminium bottom section is connected to the lifting belt via the safety arresters.

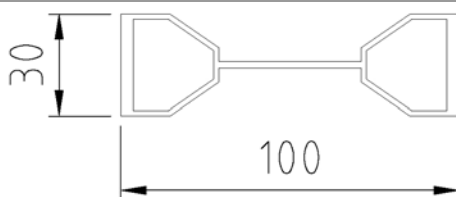
The fabric is attached to both sides of the intermediate sections, top section and bottom section with self-tapping screws through aluminium clamp strips, providing maximum tightness.

Wind load is transferred to the vertical guide rails by the horizontal aluminium sections of the door leaf.



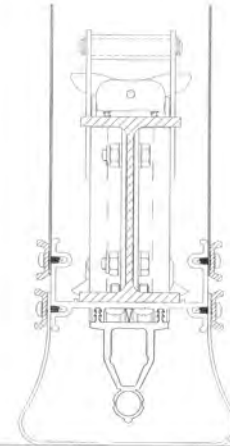
### 1.2.2 Intermediate section

The intermediate sections give strength to the door leaf and create a buffer between the inside and outside fabric walls. Self-lubricating slide blocks at each end of the intermediate sections run in the guide rails when the door opens and closes.



### 1.2.3 Bottom section

The bottom section, made of steel and aluminium, is connected to the lifting belt via the safety arresters. The bottom section contains an optical safety edge and a rubber seal on the bottom edge that creates a seal between the door and the floor.



### 1.2.4 Safety arresters

The safety arresters are connected to each end of the bottom section. The lifting belt is connected to the safety arresters.

The safety arresters have four hooks. The two upper hooks operate as a wind lock when the door is closed. The two lower hooks are the safety hooks and grip the guide rails to stop the door if the lifting belt becomes slack or, in an unlikely event, would break.



Q2.0 - 2009

### 1.2.5 Material

#### Standard Fabric

The standard door-leaf fabric is a single sheet of heavy-duty vinyl-coated polyester. The fabric is resistant to mechanical abrasion and sparks generated from mechanical processes such as welding.

The standard fabric is available in 8 standard RAL colours, however other colours are available on request.

#### Arctic Fabric

The arctic fabric replaces the standard fabric in environments where the temperature can be as low as -45°C. It is only available in blue (RAL 5010).

#### Sound-reduction Fabric

The sound-reduction fabric is for use in environments where the transmission of sound through the door must be reduced. It is installed on both sides of the door leaf.

#### Heat-resistant Fabric

The heat-resistant fabric replaces the standard fabric on the inside of the door leaf when there is a requirement to contain heat and/or chemical hazards. It is available with three different coatings dependant on the environment where it is going to be used.

#### Security Fabric

The security fabric is for use in environments where security is important. It is similar to the standard fabric with the addition of galvanized steel wires inside the fabric. It is installed on both sides of the door leaf behind the standard fabric.





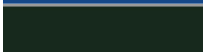


#### Vision Panels

Vision panels (windows) are available for the standard and arctic fabrics to improve light admission and visibility through the door leaf. The vision panels are available in four different sizes.

### 1.2.6 Colours

The RAL-colours are as close as possible to the official RAL HR collection.

#### 1.2.6.1 Standard colours

	RAL 1001
	RAL 1003
	RAL 3001
	RAL 5005
	RAL 6009
	RAL 7004
	RAL 9016
	Translucent white

#### 1.2.6.2 Optional colours

- Other colours are available on request.

### 1.2.7 Options

#### Clamp strip covers

Clamp strip covers are plastic strips that clip onto the clamp strips. they are available in the same standard colours as the fabric.

The benefits of the clamp strip covers are:

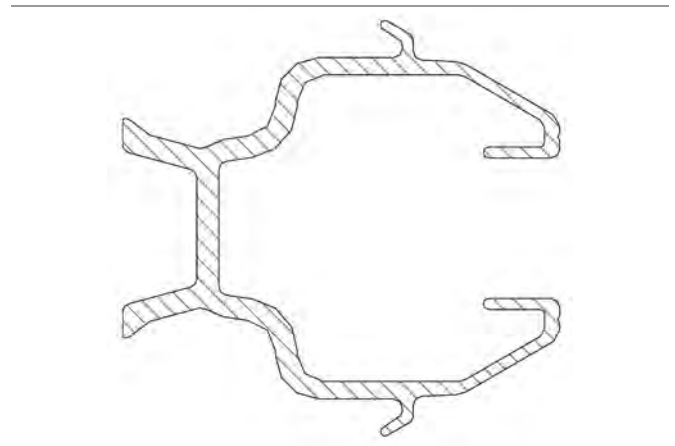
- Improve the appearance of the door leaf
- Cover the screws
- Protect the door leaf from discolouration in certain environments.



## 1.3 Guide rails

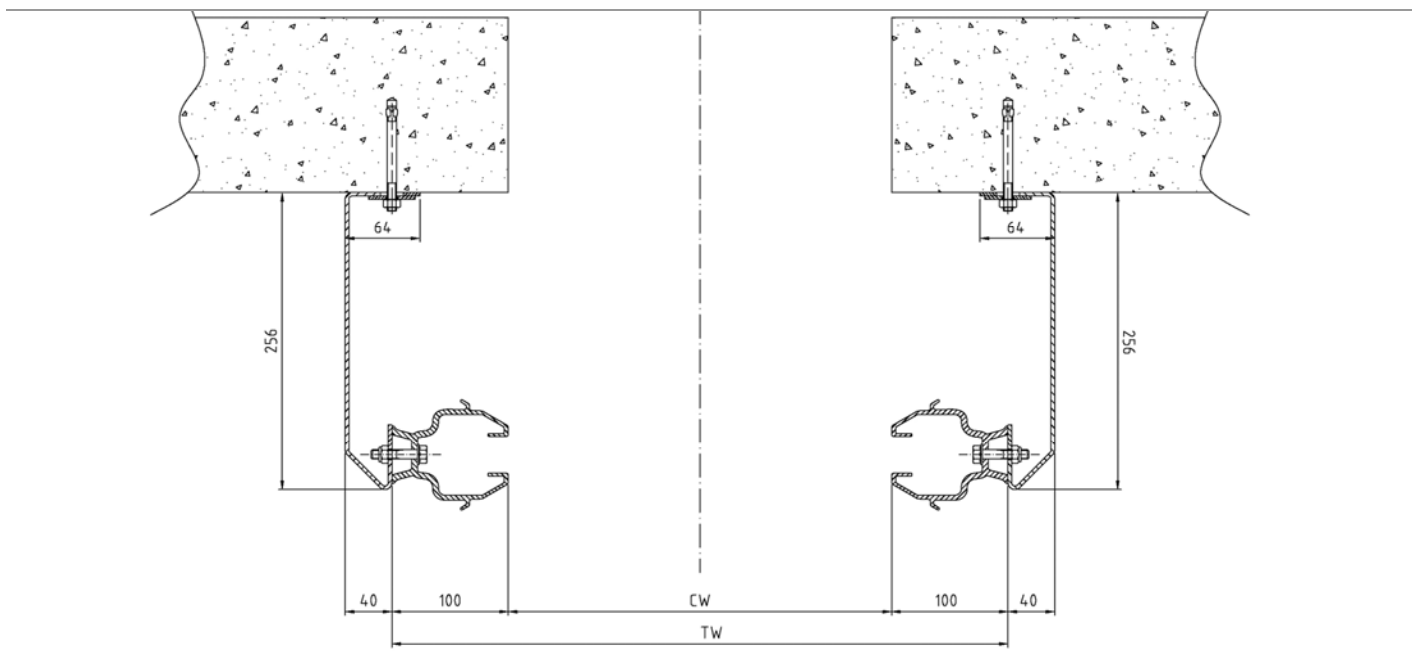
The vertical guide rails are made from extruded aluminium. The lubrication-free slide blocks at each end of the door leaf sections travel through these guide rails.

The guide rails have weather sealing on the inside and outside faces. There is also a space inside the guide rails for the lifting belt of the drive unit and safety arresters.



### 1.3.1 Jamb

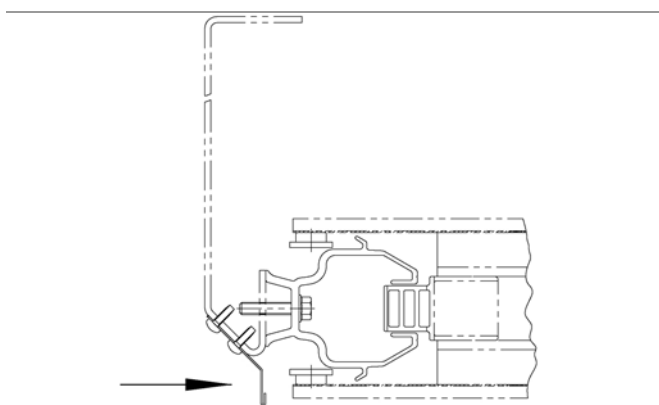
If posts for installing the guide rails are not available, stable jambs can be provided. These jambs can be installed in the same way as the guide rails. It is possible to insulate the jambs, but material for the purpose is not included in the delivery. The jambs are made of steel painted black.



Q2.0 - 2009

### 1.3.2 Wind deflectors

Used with jambs to avoid strong side winds, pressing sand or snow inside the door leaf.



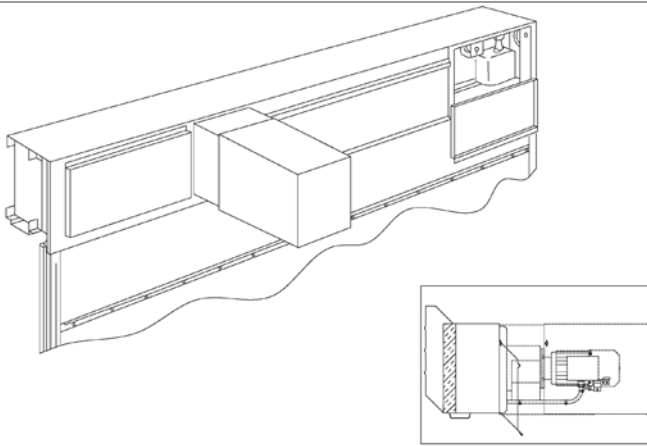
## 1.4 Header box

The header box contains the gear motor, the belt drum, lifting belts, pulleys and limit switch boxes. It can be installed with the gear motor on the inside or the outside of the building. As standard, the motor side of the header box is enclosed by powder-coated sheet steel covers. Hatches allow access to components that need maintenance.

### 1.4.1 Header box options

#### 1.4.1.1 Non-motor side covered

If the header box is positioned in the door opening with the gear motor facing inwards, the non-motor side should be fitted with a cover. An inspection can still be done from the motor side, in this case from inside the building. The header box can be insulated as an option.



#### 1.4.1.2 Protective casing for motor

In corrosive or dirty environments, the motor should be fully protected. The protective casing is made of powder-coated sheet steel. The casing has a hatch to facilitate easy access to the motor for emergency operation. The casing is detachable. Existing doors can also be equipped with a protective casing.

#### 1.4.1.3 Stainless steel cladding and motor casing

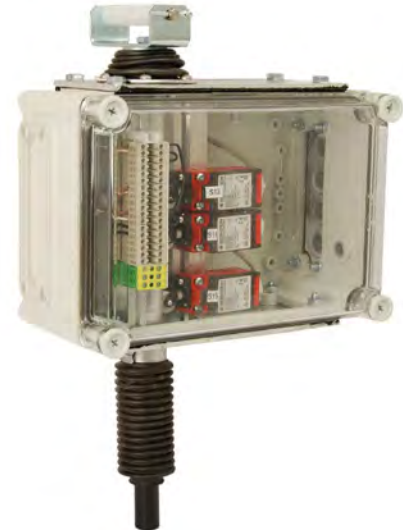
In corrosive environments, the header box, including the mechanical unit, can be enclosed in stainless steel casing.

#### 1.4.1.4 Cover for limit switch boxes

An optional steel cover for the limit-switch box provides protection from dirt and moisture.

#### 1.4.1.5 Dust proof limit switch boxes

An optional dust-proof limit-switch box (IP64) replaces the standard limit-switch box. This provides full protection from dry particles of any size.

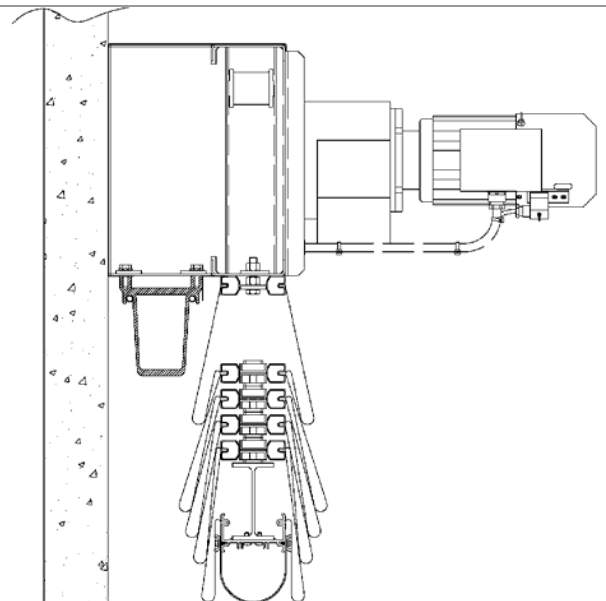


#### 1.4.1.6 Heater in limit switch boxes

In environments with very low and variable temperatures where humidity is high, it is recommended to use heaters to avoid moisture inside the limit-switch boxes.

### 1.4.2 Self-supporting header box

If there is no suitable installation surface above the door opening, a self-supporting header box can be installed. A supporting beam, installed on the bottom of the header box, transfers the weight of the header box and the door leaf via the jambs to the building.



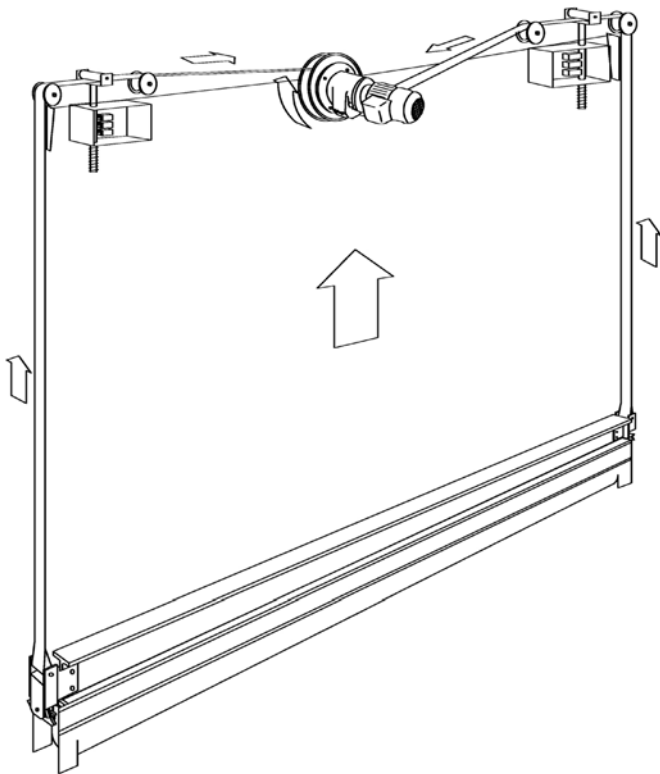
## 1.5 Operating system

### 1.5.1 Electrical operation

The Megadoor S800 Vertical fabric folding door is always supplied with an electrical operating system, a control unit near the door and a gear motor in the header box.

The door is opened by an impulse from the UP-button or from an optional device, such as a radar or magnetic loop.

The door is closed by an impulse from the DOWN-button or by an optional device.



### 1.5.2 Belt system

The belt system consists of one lifting belt that can withstand corrosion, dust and dirt. This belt is connected to the safety arresters at both ends of the bottom section, through the guide rails, up to the belt drum. The belt drum is installed on the output shaft of a braked reduction-gear motor by a keyed joint.

The door is equipped with an over-speed brake, a safety device with a speed monitor on the rear side of the belt drum. With the help of brake wires and locking wedges, it locks the lifting belts if the motor speed gets too high during closing.

### 1.5.3 Gear motor

The gear motor is suited for the actual weight of the door leaf. The electric gear motor winds the belt onto a drum.

In the event of a power failure, the door can be manually operated by means of a hand crank connected to the motor. The gear can be removed without disturbing the limit switch adjustment.

### 1.5.4 Control unit

The door is supplied with a PLC-based control unit installed near the door. The control unit commands the gear motor via push buttons or via external activators, e.g. a mechanical loop or radar.

The UP and DOWN buttons are operated by impulse. The DOWN button can be set to hold-to-run. The gear motor can be disabled from the control unit for emergency hand-crank operation by switching off the mains.



#### 1.5.4.1 PLC

The control unit contains a PLC for the setting of timers, automatic and safety functions. The PLC is programmed and configured before delivery. The menu gives the following information:

- Number of days of operation and number of door openings from the start and since the door was last serviced
- Current settings
- Diagnostics.

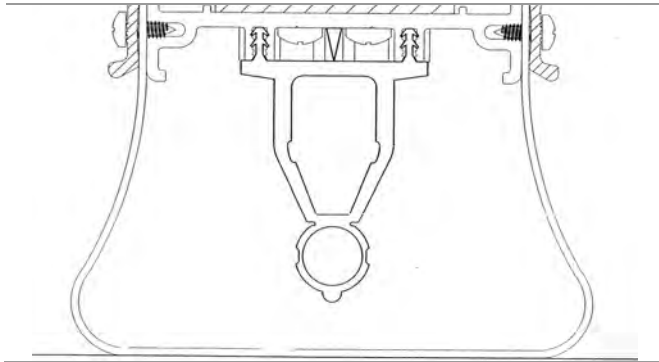
#### 1.5.4.2 Heating element

An optional heating element can be installed in the control unit, to avoid moisture inside the unit at low and variable temperatures and in moist air.

### 1.5.5 Safety edge

The Megadoor S800 Vertical fabric folding door has an optical safety edge on the bottom of the door. If the door hits an obstacle, the IR-beam is interrupted. The door will stop and return to its original position.

The optical beam runs through an enclosed rubber tube. The steel profile in the bottom section ensures a straight line across the entire width of the door.





### 1.5.6 Access and automation

Megadoor offers a wide range of functions that allow advanced opening and safety control.

#### 1.5.6.1 Basic control functions

##### Hold-to-run control

If required, the door can be supplied without safety edge, with closing by hold-to-run control as only alternative.

##### Interlocking



Developed for climate control or safety; if door A is open, door B cannot be opened. If door B is open; door A cannot be opened. Selector switch in control unit.

##### Reduced opening



When it is unnecessary or undesirable to fully open a door, an additional timer can be used to open the door to a pre-programmed reduced opening position. Selector switch in control unit.

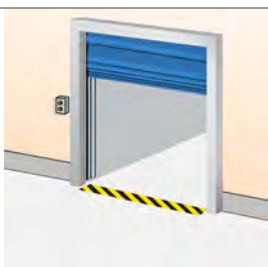
#### 1.5.6.2 External control functions

##### Pull-rope switch



A pull rope switch next to the door opening can be operated from e.g. a forklift truck. Pulling the rope opens a closed door or closes an open door. Installed on the wall, with bracket.

##### External push button box



An extra control box is installed outside the building or inside close to the door if the main control unit needs to be installed away from the door opening. Installed on the inside or outside wall beside the door.

##### Remote control



A hand-held radio transmitter allows door operation from a vehicle or any position within 50-100 meters from the receiver and aerial at the door. Receiver installed in control unit, antenna installed on the wall beside the door.

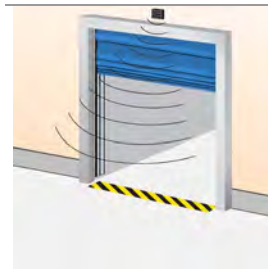
#### 1.5.6.3 Automatic control functions

##### Magnetic loop



A sensor in the floor detects a metal object (usually forklift trucks, pallet trucks) and opens the door automatically. This is an ideal solution for frequent vehicle traffic. Installed on the outside, inside or both sides of the door in the ground.

##### Radar



An infrared sensor above the door detects an object (person, vehicle) within a specified distance from the door and opens the door automatically. This is an ideal solution for frequent vehicle or personal traffic. Often combined with automatic closing. Installed on the inside or outside wall above the door.

##### Automatic closing



A programmable timer that closes the door after a specified time, counted from either the fully open position and/or from passing through the photocell beam. Selector switch in control unit.

##### Automatic opening and closing



A programmable timer that closes the door after a specified time, counted from either the fully open position and/or from passing the photocell beam. A sensor, e.g. a magnetic loop or a radar, is used for automatic opening.

Selector switch in control box and magnetic loop or radar.

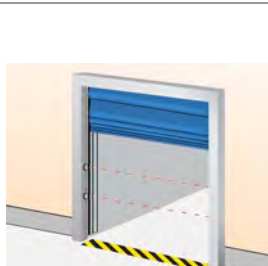
1.5.6.4 Safety functions

Safety photocells 1-channel



A set of a photocell transmitter with reflector or receiver is installed in the door opening. If the photocell beam is interrupted during closing, the door will stop in less than 30mm and reverse to the fully open position.  
Installed in the door opening.

Safety photocells 2-channel



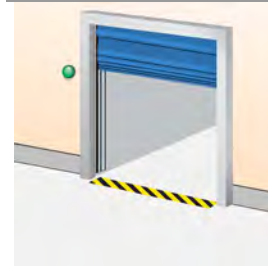
Two sets of photocell transmitters with reflectors and receivers are installed in the door opening. If one or both photocell beams are interrupted during closing, the door will stop in less than 30mm and reverse to the fully open position.  
Installed in the door opening.

Warning lights - Red



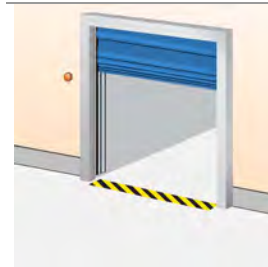
One or two red warning lights indicating that the door is moving or closed; continuous light when the door is closed, flashing light when the door is moving or not fully open.  
Installed on the inside and/or outside wall beside the door.

Warning lights - Green



One or two green warning lights indicating the open position of the door by continuous light signal.  
Installed on the inside and/or outside wall beside the door.

Warning lights - Orange flashing lights



Flashing light during door movement.  
Optional; Flashing lights during an adjustable time period before automatic closing. Automatic closing required.  
Installed on the inside and-or outside wall beside the door.

Emergency power switch



An external power switch can be enabled, as a backup system, in case of a power failure.  
Supplied with steel casing and power inlet socket.

1.5.6.5 Additional functions

Increased opening speed

The door can be equipped with an optional motor that doubles the opening speed to 0.4 - 0.6 m/s.

Q2.0 - 2009



## 2. Specifications

### 2.1 Clear width and clear height

The standard Megadoor S800 vertical fabric folding door is delivered in the following size range:

Standard door sizes*		
	Clear width	Clear height
Min.:	1810 mm	
Max.:	8000 mm	12000 mm

\* Other sizes may be available on request

### 2.2 Performance

Door leaf thickness	100 mm
Normal opening speed	0.2 - 0.3 m/s
Increased opening speed	0.4 - 0.6 m/s
Resistance to wind load/standard differential pressure (higher wind load resistance on request)	0.7-1.6 kPa*class 3-5 depending on door size
Resistance to water penetration	0.11 kPa (class 3)
Thermal transmittance	Depends on door size
Air permeability	12 m <sup>3</sup> /(m/h), (class 2) acc. to EN13241
Sound reduction	15 dB Rw, acc. to ISO 717

### 2.3 Environmental tolerance

Heat and cold resistance	-35°C to +70°C
Atmospheric humidity	below dew point
Presence of particles	< 1000 µg/m <sup>3</sup> air
Mechanical load, blasting	Not directly aimed.
Differential pressure, closed door	Temporary 0.7 kPa (EN12424, class 3)
Wind speed, in motion	< 20 m/s
Acidity	Condensate at 5<pH<9
Explosive fumes or dust	No occurrence.

\*In the normal version, the door is suited for operation in environments within the limits stated above. If the requirements exceed these limits (e.g. wind load), the door can often be modified on request.

### 2.4 Surface treatment

Steel components	For corrosion, category 3 according to ISO 12944.2. Higher class on request.
Other parts	Aluminium, plastic, stainless steel, zinc electroplated steel (~ 10µ). Fixing elements are zinc electroplated (~ 10 µ). Door leaf screws are corrosion protected with Geomet.

## 2.5 Door leaf

### 2.5.1 Fabric data

#### 2.5.1.1 Standard fabric

Application	Standard		
Use	Standard		
Coating	Plasticized PVC		
Fabric	Polyester, 1100 dtex		
Weight	700 g/m <sup>2</sup>		
Heat- and cold resistance	-35°C to +70°C		
Tensile strength	Warp : 2700N/5 cm acc. DIN 53354, EN ISO 1421 Weft : 2500N/5 cm acc. DIN 53354, EN ISO 1421		
Tear resistance	Warp : 370N acc DIN 53363 Weft : 320N acc. DIN 53363		
Resistance to light	6 - 8 (on a scale 0-8) acc. BS 1006 ≥ 7 acc. ISO 105-B02		
UV-stabilized	Yes		
Flame resistant	Yes, acc. SIS 650082, ASTM E84-94 class A, DIN 4102 B1		
Mildew resistant	Yes		
Rot resistant	Yes		
Radar reflection	0.3 dB, - 0.1%		
Lacquered	Yes		
Standard shades	<ul style="list-style-type: none"> <li>• Tan</li> <li>• Yellow</li> <li>• Red</li> <li>• Blue</li> <li>• Green</li> <li>• Grey</li> <li>• White</li> <li>• Translucent white</li> </ul>	<ul style="list-style-type: none"> <li>NCS 2010Y-40R</li> <li>NCS S0570-Y20R</li> <li>NCS 2070-R</li> <li>NCS S3560-R80B</li> <li>NCS 8010-G10Y</li> <li>NCS 3500</li> <li>NCS 0500</li> </ul>	<ul style="list-style-type: none"> <li>RAL 1001</li> <li>RAL 1003</li> <li>RAL 3001</li> <li>RAL 5005</li> <li>RAL 6009</li> <li>RAL 7004</li> <li>RAL 9016</li> </ul>
Logotype	Optional		
Vision panels	Optional		

#### 2.5.1.2 Arctic fabric

Application	Environmental temperatures down to -45°C		
Use	Replaces standard fabric		
Coating	PVC/PU (mixed)		
Fabric	Polyester, 1100 dtex		
Weight	680 g/m <sup>2</sup>		
Heat- and cold resistance	-45°C to +70°C, acc. SFS-EN 1876-1		
Tensile strength	Warp : 3000N/5 cm acc. DIN 53354 Weft : 3000N/5 cm acc. DIN 53354		
Tear resistance	Warp : 350N acc DIN 53356 Weft : 300N acc. DIN 53356		
Resistance to light	6 - 8 (on a scale 0-8) acc. BS 1006		
UV-stabilized	Yes		
Flame resistant	Acc. DIN 75200		
Mildew resistant	Yes		
Rot resistant	Yes		
Comment	Fabric colour blue only, RAL 5010		



### 2.5.1.3 Sound reduction fabric

Application	Sound reduction
Use	On both sides of the door behind the standard fabric
Coating	Plasticized PVC
Fabric	Polyester, 1100 dtex
Weight	1850 g/m <sup>2</sup>
Sound reduction (incl. standard fabric)	Index Rw23dB*, tested by SP Swedish National Testing and research Institute
Heat- and cold resistance	-30°C to +70°C, acc. SFS-EN 1876-1
Tensile strength	Warp : 3000N/5 cm acc. DIN 53354 Weft : 2900N/5 cm acc. DIN 53354
Tear resistance	Warp : 380N acc DIN 53356 Weft : 300N acc. DIN 53356
Flame resistant	Acc. SIS 650082, DIN 4102-B1

Note! Must always be quoted by Megadoor.

\* Weighted apparent sound reduction index acc. ISO 717-1. For more information, ask for SP-report P103341, dated 15 June 2001 'Determination of sound insulation of an industrial door according to SS-EN ISO-140-3:95'.

### 2.5.1.4 Heat resistant fabric - Silicone coating

Application	<ul style="list-style-type: none"> <li>• Hot air environment</li> <li>• Coating highly resistant to chemicals</li> <li>• Dirt and oil repellent</li> <li>• Electrical insulation</li> <li>• Weatherproof, UV and oxidation resistant</li> </ul>
Use	Replacing standard fabric
Designation	Alpha Maritex 3200-2-SS
Coating	Silicon rubber on both sides
Fabric	Woven glass fibre EC9-136
Weight	555 g/m <sup>2</sup>
Heat- and cold resistance	Coating -36°C to +260°C
Tensile strength	Warp : 450N/ cm acc. DIN ISO 4606 Weft : 440N/cm acc. DIN ISO 4606
Flame resistance	Acc. BS 476:Part 7, 1971 Part 6, 1989, M0. BS6853:1987 App. B, IMO resolution A653 (16)
Approvals	<ul style="list-style-type: none"> <li>• Lloyds: SVG/F92/110, SAS F970017</li> <li>• Powergen 08/65/242, LUL E 1042 A3</li> <li>• National Power 08/GS/259</li> </ul>
Comments	<ul style="list-style-type: none"> <li>• Never combine standard and heat resistant fabric (for example upper part of the door with standard and lower part of the door with heat resistant fabric).</li> <li>• Protect the bottom sealing with the fabric as well.</li> <li>• When the door is installed against a wall on the cool side, the folding space on the hot side must be increased by at least 100 mm to avoid fabric wear.</li> <li>• The motor should be placed on the cool side. A heat radiation shield below the motor may be necessary.</li> <li>• All cables must be protected.</li> <li>• The clear height should be as large as possible.</li> </ul>

Note! Must always be quoted by Megadoor.

Q2.0 - 2009

### 2.5.1.5 Heat resistant fabric - Aluminium coating

Application	Hot air and high radiation temperatures inside (e.g. foundries). Good heat reflection properties.
Use	On the inside of the door (never on the outside) replacing standard fabric.
Designation	332 AL-HTT
Coating	Aluminium pigments on polyurethane adhesive on one side of the fabric.
Fabric	E-glass EC9-136 (cross twil)
Weight	490 g/m <sup>2</sup>
Heat- and cold resistance	From contact coating +200°C (not continuously)
Tensile strength	Warp : 800N/cm acc. DIN 53857 T1 Weft : 500N/cm acc. DIN 53857 T1
Comments	<ul style="list-style-type: none"> <li>• Never combine standard and heat resistant fabric (for example upper part of the door with standard and lower part of the door with heat resistant fabric).</li> <li>• Protect the bottom sealing with the fabric as well.</li> <li>• When the door is installed against a wall on the cool side, the folding space on the hot side must be increased by at least 100 mm to avoid fabric wear.</li> <li>• The motor should be placed on the cool side. A heat radiation shield below the motor may be necessary.</li> <li>• All cables must be protected.</li> <li>• The clear height should be as large as possible.</li> </ul>

Note! Must always be quoted by Megadoor.

### 2.5.1.6 Heat resistant fabric - Polyurethane coating

Application	Fire barrier
Use	On the inside of the door (never on the outside) on the outside of the standard fabric.
Designation	Texo 640-1
Coating	Polyurethane based with functional filler.
Fabric	Woven glass fibre Klevo Glass Texo 640-1 L
Weight	675 g/m <sup>2</sup>
Heat- and cold resistance	Coating -30°C to +200°C
Tensile strength	Warp : 600N/cm acc. DIN ISO 13934-1 Weft : 500N/cm acc. DIN ISO 13934-1
Comments	<ul style="list-style-type: none"> <li>• Weight compensation on opposite side may be needed; check with Megadoor</li> <li>• Similar fabric without coating was tested in 1981 by SP Swedish National Testing and research Institute, fire laboratory. The door fulfilled the tightness and fire diffusion requirements acc. FIRE 005 for 43 min. 45 sec.</li> </ul>

Note! Must always be quoted by Megadoor.

### 2.5.1.7 Security fabric

Application	Protection against burglary
Use	On both sides of the door, behind the standard fabric. Up to approx. 2 metres from floor
Designation	Protector Classic FR
Fabric	PVC coated
Reinforcement	Galvanized steel wires in four directions
Weight	950 g/m <sup>2</sup>
Heat- and cold resistance	-30°C to +70°C
Flame resistant	M2, acc. NF P92-507 (French standard)
Comments	Space for fabric folding must be increased by 100 mm on each side of the door, to avoid fabric wear.

Note! Must always be quoted by Megadoor.



### 2.5.1.8 Vision panels

Application	Light admission and view through
Use	800 - 1600 mm sized windows for standard and arctic fabric only
Standard sizes	Width 800 or 1300 mm, height 800 or 1600 mm
Material	Elaston 064, 1 mm
Weight	1230 g/m <sup>2</sup>
Hardness	77° shore acc. DIN 53505
Heat- and cold resistance	-30°C to +50°C
Tear resistance acc. DIN 53455	Along : 21 N/mm <sup>2</sup> Crosswise : 20 N/mm <sup>2</sup>

## 2.6 Operating system

### 2.6.1 General specifications

Control system	PLC-based
Protection class, control cabinet	IP65
Protection class, limit switches	IP65
Protection class, motor brake	IP55
Protection class, push buttons	IP65
Power supply	3/phase 400V 50Hz *other alternatives available on request
Control voltage	24V AC
Fusing	16 A
Free contacts	6 for control of user functions
Heat and cold resistance	-35°C to +70°C
Motor ratings	0.37 - 3.3 kW

Q2.0 - 2009

## 3. CEN Performance

The following tests have been carried out by the Swedish National Testing and Research Institute (SP) in Borås. For more detailed information and values, see SP report : F026760.

### 3.1 Resistance to windload

Windload resistance*	class 3, EN 12424
----------------------	-------------------

\* Higher class on request.

### 3.2 Additional tests

Water penetration (closed door)	class 3, EN12425
Air permeability	class 2, EN12426



# 4. Building and space requirements

## 4.1 Building preparations

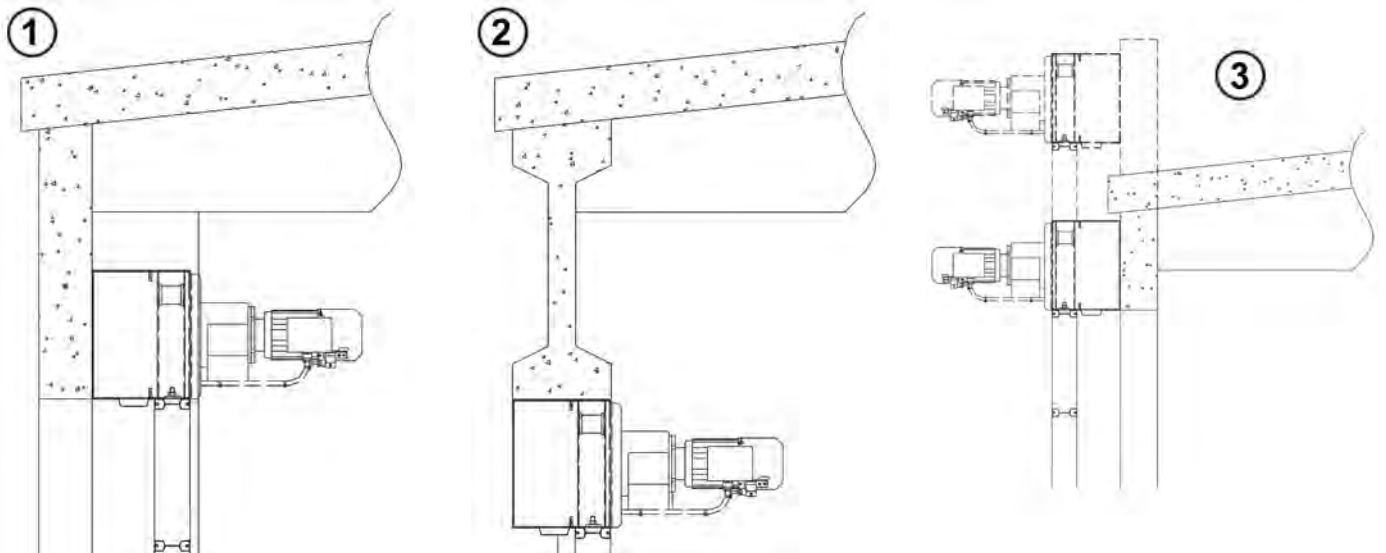
### 4.1.1 Installation of the header box

#### 4.1.1.1 Basic installation

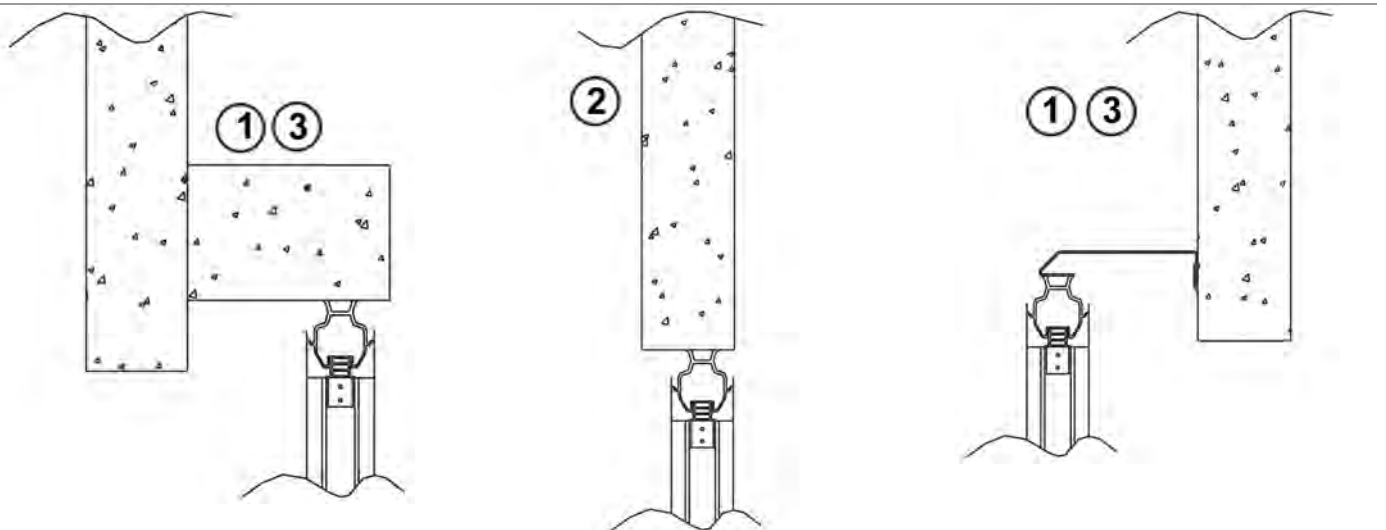
The Megadoor S800 vertical fabric folding door can be installed in three ways:

1. Internal wall mounting	2. Mounting in door opening	3. External wall mounting
Recommended if the size of the door opening permits it. The drive machinery and guide rails will then be fully protected.	Excellent alternative for an existing door opening. The risk of colliding with the guide rails should be negligible, or a collision shield should be used as protection.	Alternative when the inside environment is severe or when there is insufficient space above the door opening.

#### Side view header box



#### Top view guide rail and door leaf

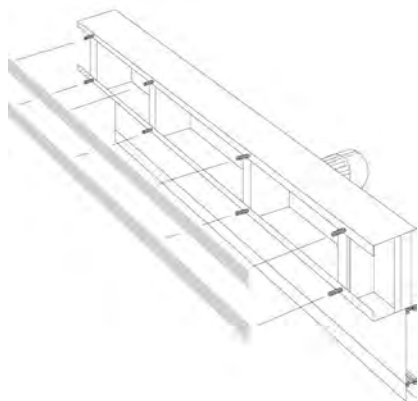


Q2.0 - 2009

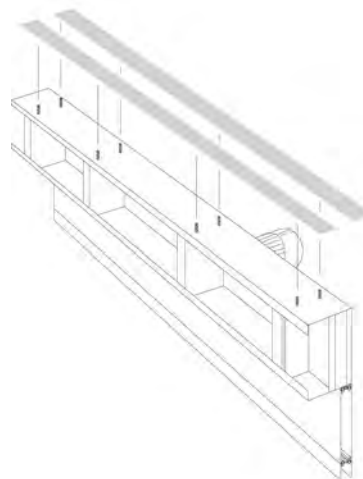
Installation surfaces for the header box must be flat, parallel and deviate maximum 5 mm from a horizontal line.

Min. thickness (t) of installation surface: steel 8 mm, concrete 100 mm. Min. width of each installation surface : 100 mm.

### Installation surfaces – on wall



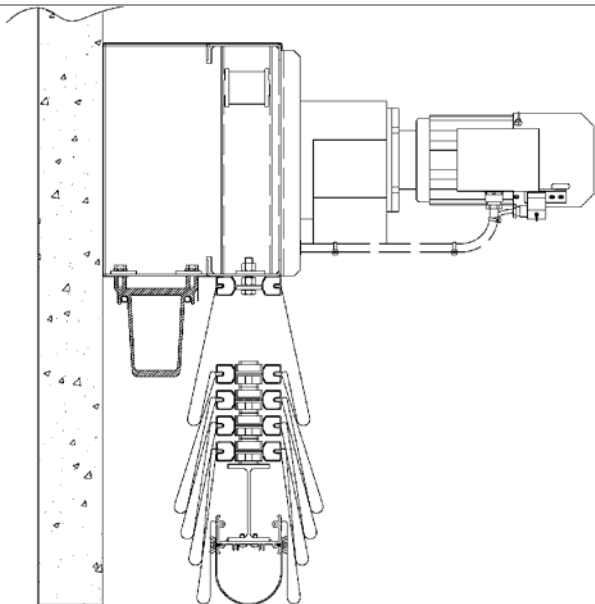
### Installation surfaces – in door opening



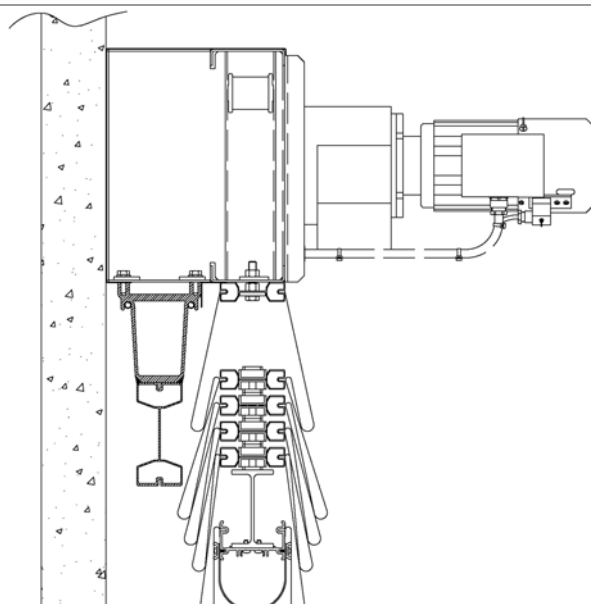
#### 4.1.1.2 Self-supporting installation

Megadoor can supply a self-supporting door if there is no suitable mounting surface over the door opening. A supporting beam, installed on the bottom of the header box, transfers the load of the header box via the jambs of the door to the building. The jambs support the beam and secure the guide rails.

#### Clear width $\leq 6800$ mm



#### Clear width $> 6800$ mm



#### 4.1.2



### 4.1.3 Installation of the guide rails

#### 4.1.3.1 Basic installation

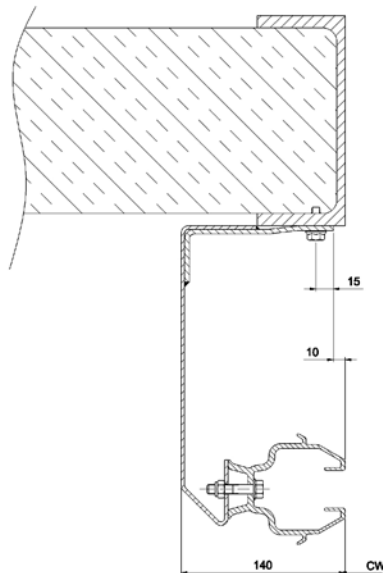
When installing on an existing surface, this surface must be made either from steel or concrete. The installation surfaces must be strong, smooth and parallel and deviate max. 5 mm from the vertical and 2 mm in the inward/outward direction from the vertical.

- Min. thickness of installation surface : steel 6 mm, concrete 90 mm.
- Min. width of installation surface : steel 50 mm, concrete 65 mm.

#### 4.1.3.2 Installation with jambs

When the door is installed on a wall and posts for installation of the guide rails are not available, jambs of a stable design are provided. The jambs are installed in the same way as the guide rails, by screws or plugs with a spacing of about one meter. The jambs can be insulated (option), but this is not included in the standard delivery. The jambs are made of steel painted black.

An extension jamb is available for S800 Vertical fabric folding door, making it possible to connect it to an existing steel construction and still obtain a shielded location for the guide rails.



### 4.1.4 Installation of the control unit

The location of the control unit is best decided as follows :

Environment	Effect on control unit	Location of control unit
Normal environment	Negligible effect, IP65 protection is sufficient.	Close to the door
Harsh interior environment	When opened for maintenance, dust and moisture may enter	In a safe area
Sustainable temperature difference inside/outside	Condensation when door is opened	Away from the door. Push button unit close to the door
Strongly corrosive environment, no safe location possible	Optimum protection required	Stainless steel control unit

Also consider the space requirements of the control unit.

## 4.2 Space requirements

TH	Total height	Distance between floor and top of header box
CH	Clear height	Distance between floor and bottom of door leaf when door is fully opened
OH	Over height	Vertical space required above the clear height
TS	Total space requirement	Distance between outer side of jambs
TW	Total width	Distance between the left and right vertical installation surfaces.
CW	Clear width	Clearance distance between the left and the right guide rails.
MD	Motor depth	Depth of the header box + gear motor + extra space for hand crank
A		Door leaf thickness
B		Minimum free space required for fabric folding
C		Distance from rear side of header box to guide rail centre

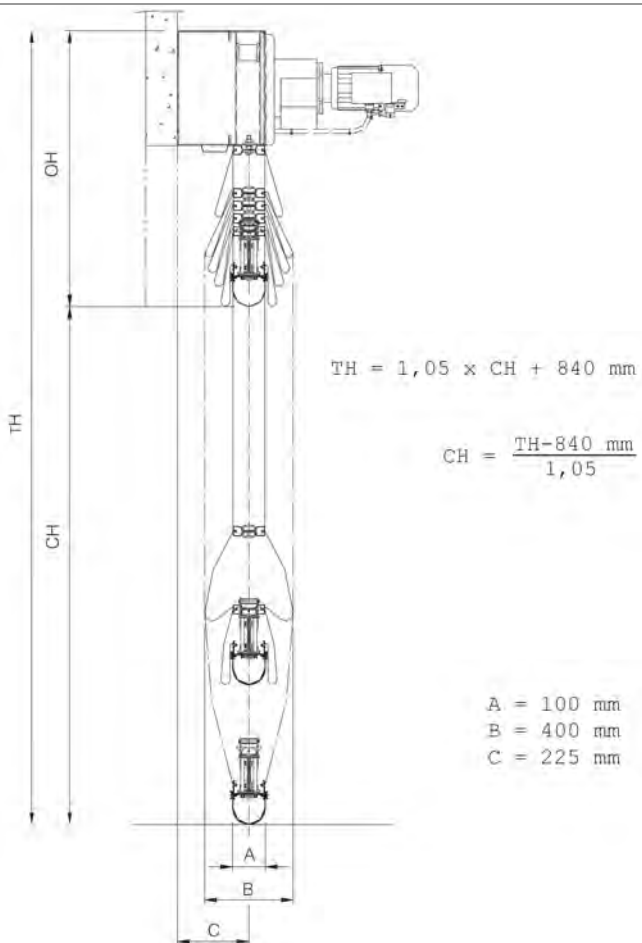
### 4.2.1 Space requirements for operation

In contrast to other types of doors, the Megadoor S800 vertical fabric folding door requires only limited top and side space. The door leaf is compressed when opened. Even for a large door, the requirements are minimal.

### 4.2.2 Space requirements for control unit

The following dimensions (w x h x d) may be of assistance in deciding where to place the control cabinet, possible additional cables or an additional safety switch for the power supply :

Door control	0451
Control unit size (carbon steel or stainless steel)	400 x 500 x 200
Space requirements including brackets	600 x 700 x 220

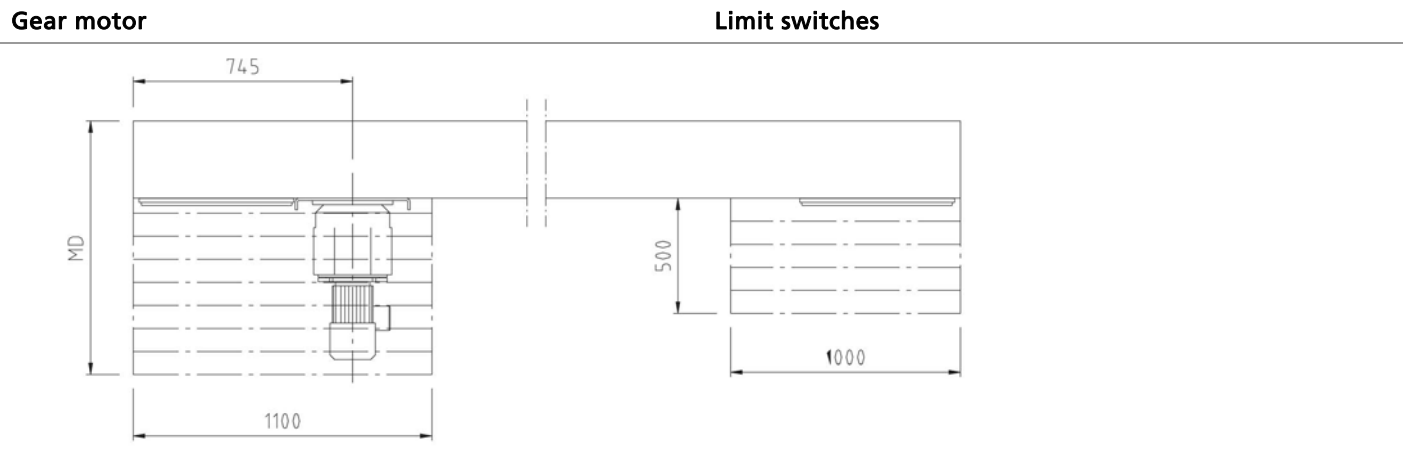


Space requirements for the self-supporting version are the same.

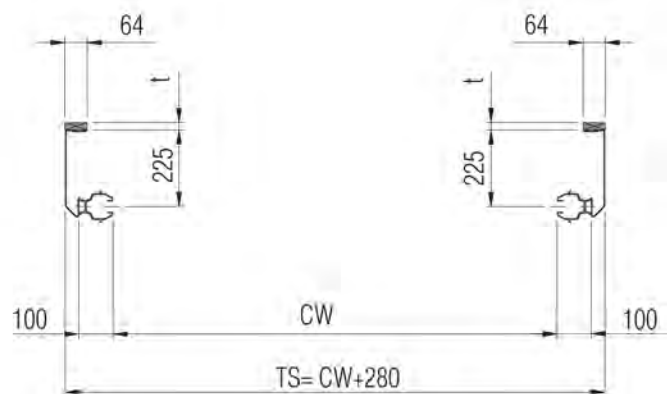
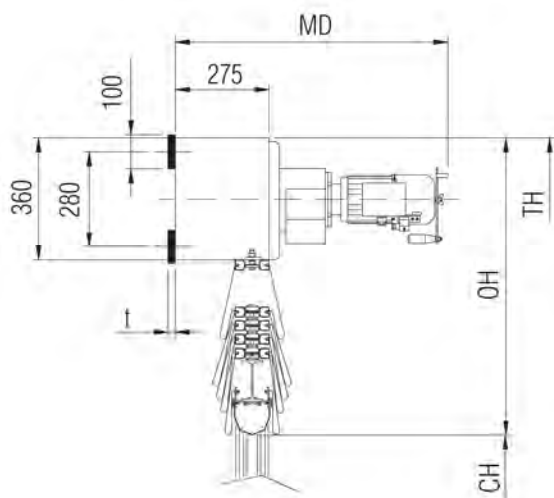
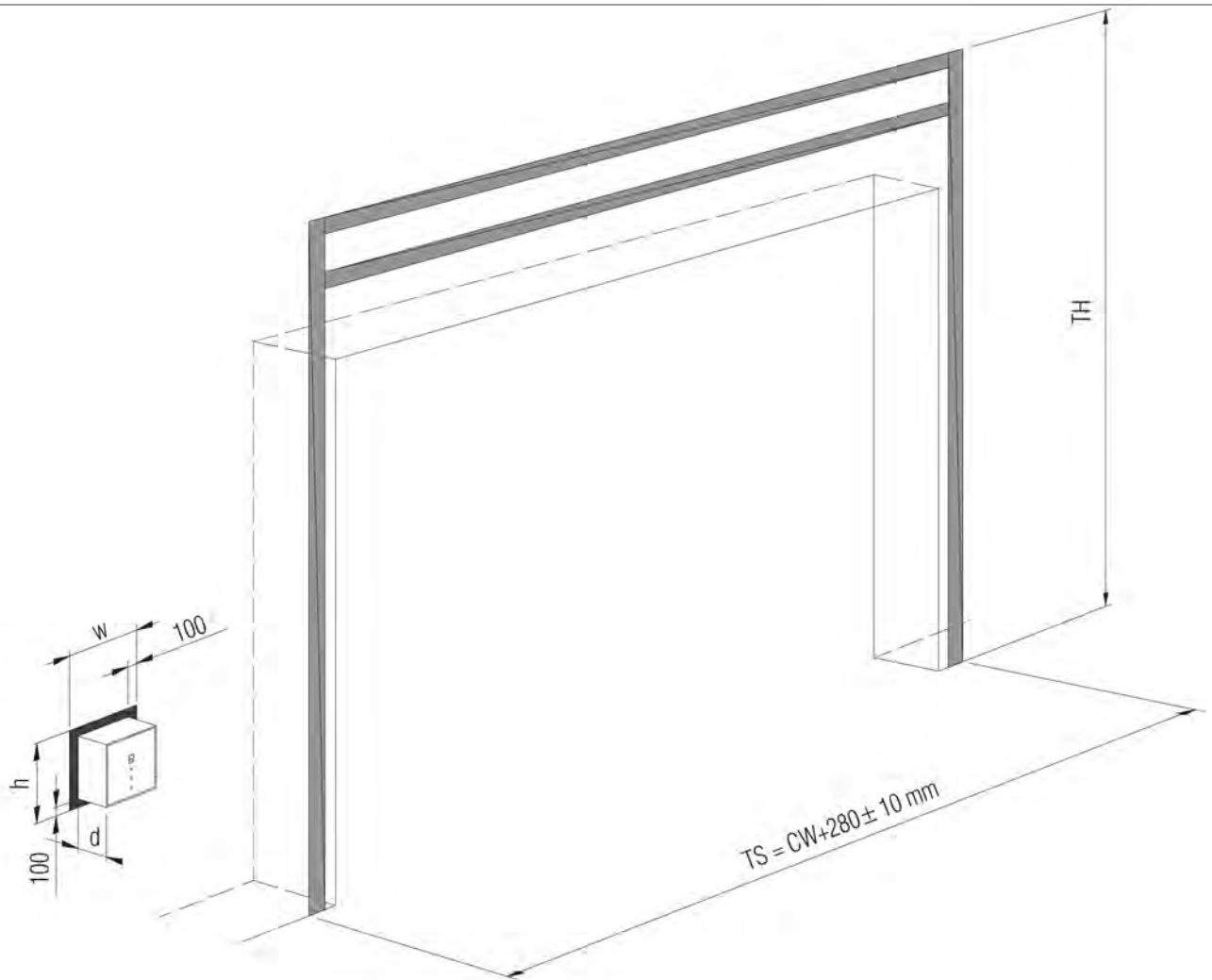


#### 4.2.3 Space requirements for maintenance

- MD = Motor depth. Depending on motor size.
- MD = 750-1100 mm (+200 mm for hand crank).



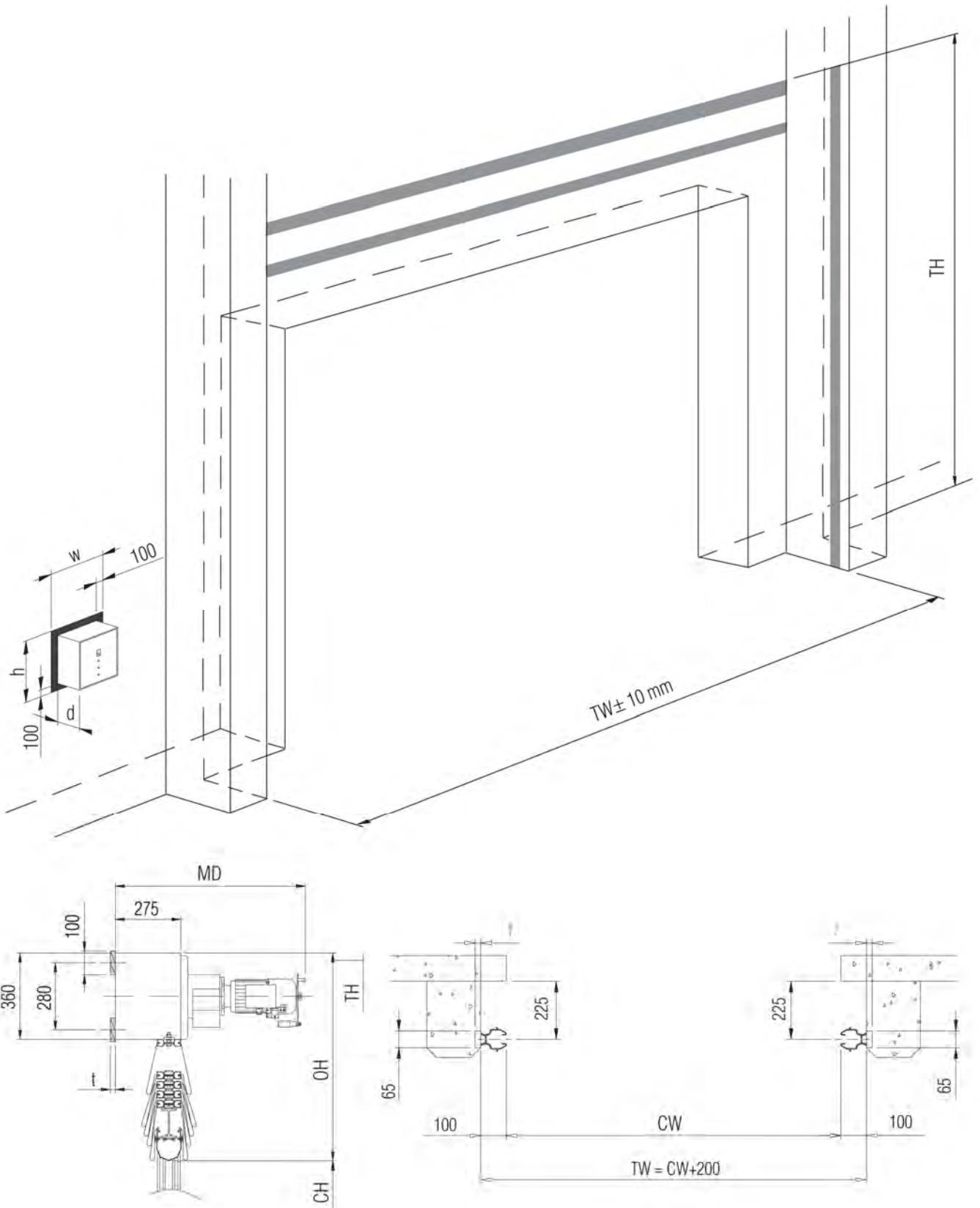
4.2.4 Space requirements - Installation against wall



Q2.0 - 2009

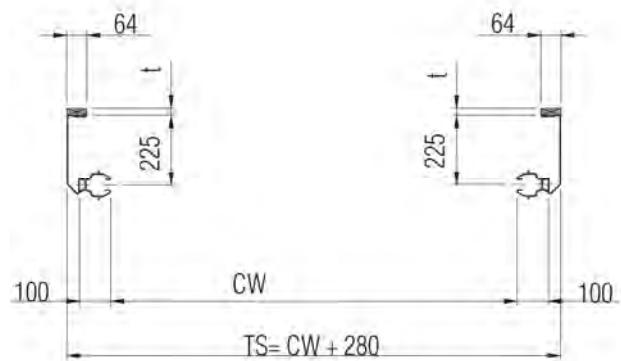
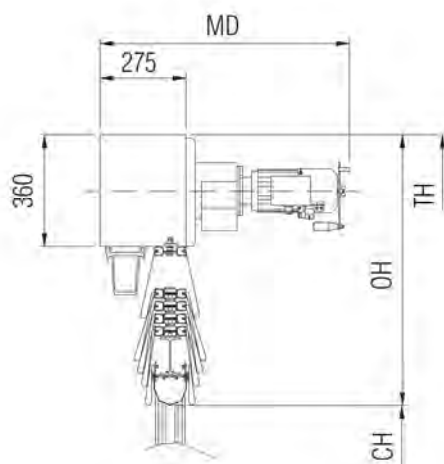
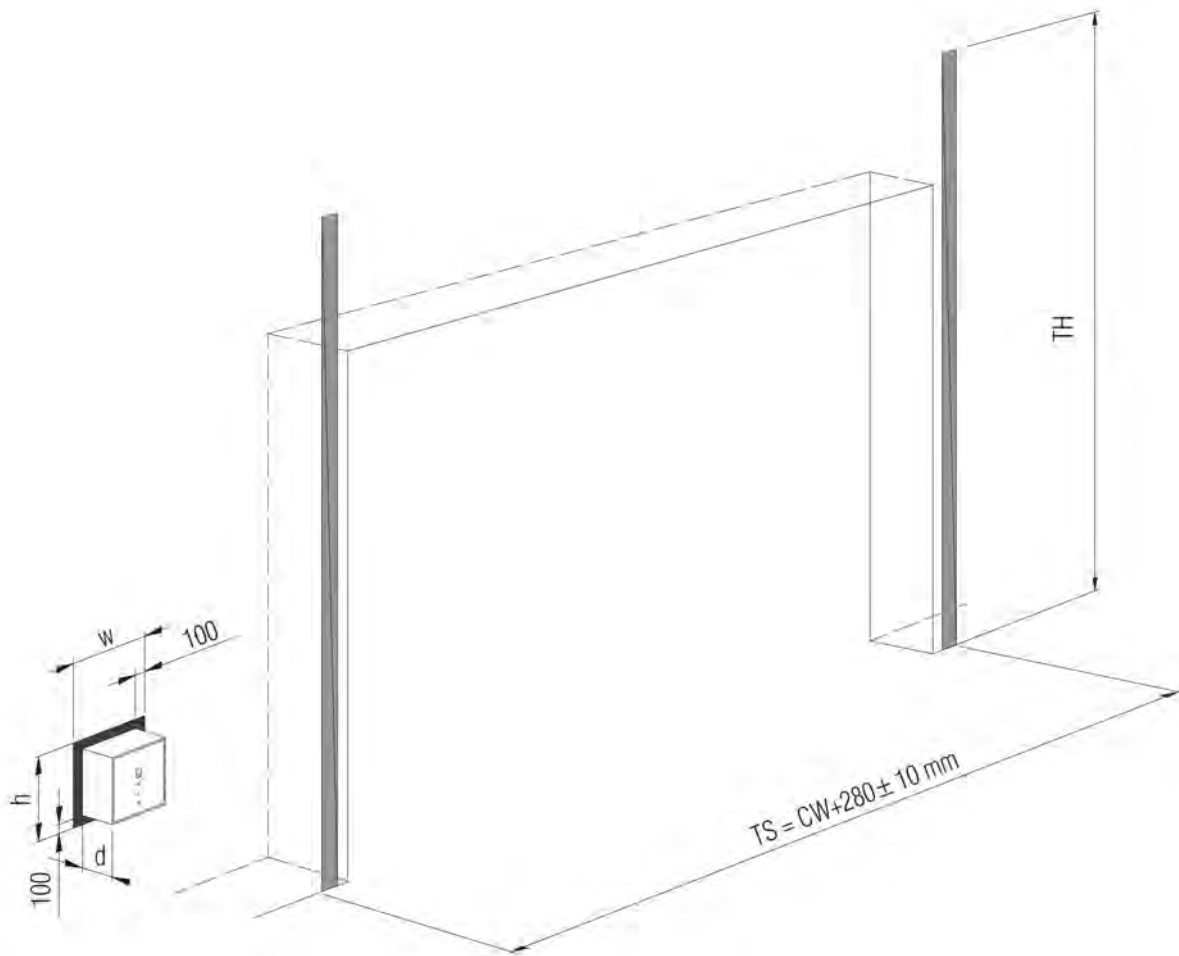


4.2.5 Space requirements S800 - Installation against wall between columns



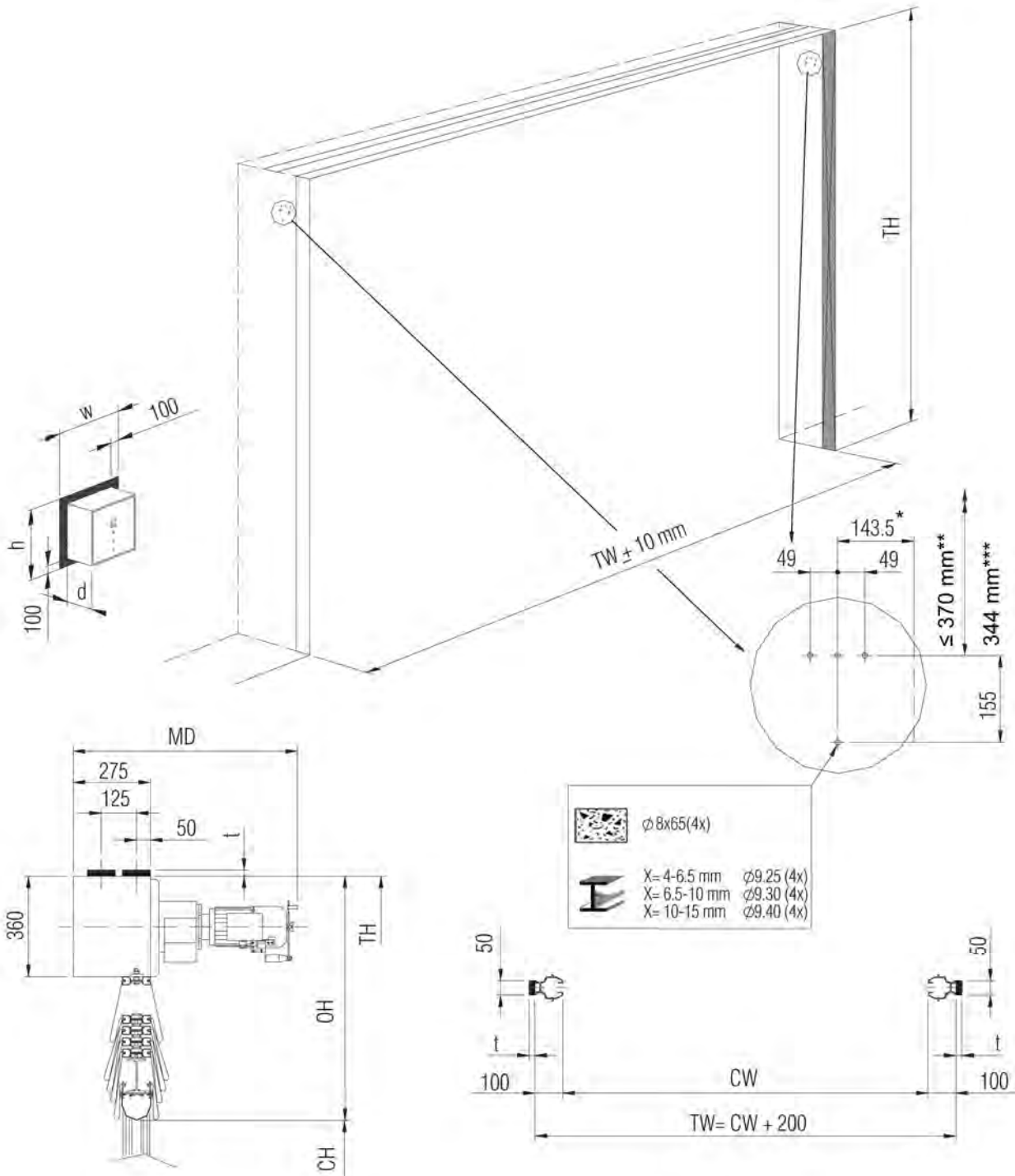
Q2.0 - 2009

4.2.6 Space requirements - Installation with self-supporting header box



Q2.0 - 2009

4.2.7 Space requirements - Installation in door opening



Q2.0 - 2009

The S800 vertical fabric folding door can also be provided with a self-supporting header box. The upper fixing surfaces are then replaced by surfaces for securing brackets.

- \* distance to door leaf centre line
- \*\* minimal clearance
- \*\*\* distance to top of header box

## 6. Index

### A

Access and automation .....	13
Additional functions .....	14
Additional tests .....	20
Arctic fabric .....	16
Automatic closing .....	13
Automatic control functions.	13
Automatic opening and closing	

### B

Basic control functions .....	13
Basic installation.....	21, 23
Belt system .....	11
Bottom section .....	7
Building and space requirements .....	21
Building preparations .....	21

### C

CEN Performance .....	20
Clear width and clear height	15
Colours .....	8
Construction .....	7
Control unit .....	11
Copyright and Disclaimer Notice.....	ii
Cover for limit switch boxes .	10

### D

Description.....	6
Door leaf.....	7, 16
Dust proof limit switch boxes .....	10

### E

Electrical operation .....	11
Emergency power switch .....	14
Environmental tolerance .....	15
External control functions .....	13
External push button box .....	13

### F

Fabric data .....	16
Features .....	iii

### G

Gear motor .....	11
General .....	6
General specifications .....	19
Guide rails.....	9

### H

Header box .....	10
Header box options.....	10
Heat resistant fabric - Aluminium coating .....	18

Heat resistant fabric - Polyurethane coating .....	18
Heat resistant fabric - Silicone coating .....	17
Heater in limit switch boxes.	10
Heating element.....	11
Hold-to-run control .....	13

### I

13	
Increased opening speed .....	14
Installation of the control unit .....	23
Installation of the guide rails	23
Installation of the header box .....	21
Installation with jambs .....	23
Interlocking.....	13
Intermediate section .....	7

### J

Jambs.....	9
------------	---

### M

Magnetic loop.....	13
Material.....	8

### N

Non-motor side covered.....	10
-----------------------------	----

### O

Operating system.....	11, 19
Optional colours .....	8
Options.....	6, 8

### P

Performance.....	iii, 15
PLC.....	11
Protective casing for motor..	10
Pull-rope switch .....	13

### R

Radar .....	13
Reduced opening.....	13
Remote control .....	13
Resistance to windload .....	20

### S

Safety arresters .....	7
Safety edge .....	12
Safety functions.....	14
Safety photocells 1-channel .	14
Safety photocells 2-channel .	14
Security fabric .....	18
Self-supporting header box .	10
Self-supporting installation..	22
Service .....	30
Sound reduction fabric.....	17

Space requirements .....	24
Space requirements - Installation against wall .....	26
Space requirements - Installation in door opening.	29
Space requirements - Installation with self-supporting header box .....	28
Space requirements for control unit .....	24
Space requirements for maintenance.....	25
Space requirements for operation.....	24
Space requirements S800 - Installation against wall between columns.....	27
Specifications.....	15
Stainless steel cladding and motor casing.....	10
Standard .....	6
Standard colours .....	8
Standard fabric.....	16
Surface treatment .....	15

### T

Technical facts.....	iii
----------------------	-----

### V

Vision panels .....	19
---------------------	----

### W

Warning lights - Green .....	14
Warning lights - Orange flashing lights.....	14
Warning lights - Red .....	14
Wind deflectors.....	9

Megadoor is a world-leading ASSA ABLOY brand focusing on solutions for exceptional access needs within specific industry segments such as Aviation, Shipyard, Mining, Waste and Recycling.

Megadoor is represented in more than 30 countries and is part of ASSA ABLOY Entrance Systems, which also includes the globally recognized Crawford and Besam brands.

[www.megadoor.com](http://www.megadoor.com)

